

AASLD Nov. 10-14, 2023  
**The Liver Meeting<sup>®</sup>**



**BOSTON, MA**



The Liver Meeting<sup>®</sup> 2023  
**PRELIMINARY  
PROGRAM AND  
REGISTRATION GUIDE**

**Stronger  
Together**

LEARN MORE!



John B. Hynes Veterans Memorial Convention Center







Message From the President

# WELCOME MESSAGE FROM NORAH TERRAULT



The **Liver Meeting**<sup>®</sup> (TLM) has earned its reputation as the premier global scientific conference in hepatology. It brings together researchers, clinicians and industry experts from around the world to collaborate, share groundbreaking research and explore and contribute to advances in the study and treatment of liver diseases.

This year's program will feature cutting-edge research, thought-provoking symposiums and interactive workshops on viral hepatitis, fatty liver disease, transplantation, liver cancer and so much more. Renowned experts will present their findings, which will shape the future of hepatology.

Beyond the science, TLM 2023 offers networking opportunities that foster connections and collaborations across disciplines. Together, we can enhance patient care and improve outcomes in patients with liver diseases.

Join us at TLM 2023 and be part of this exceptional gathering. Let's explore new frontiers, challenge existing paradigms and work toward a brighter future for individuals affected by liver diseases.

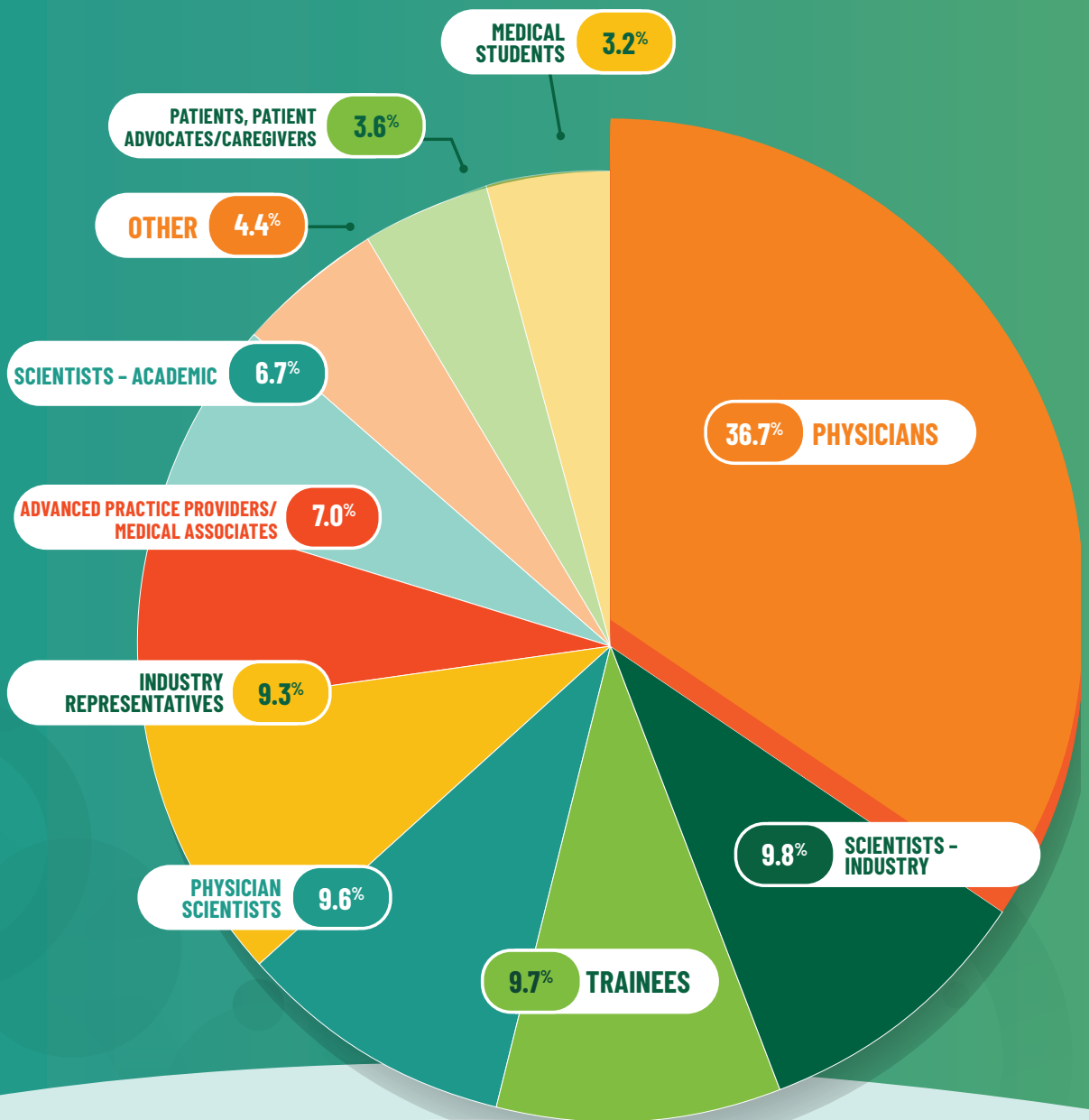
We're stronger together, at **The Liver Meeting**<sup>®</sup>.

*Norah Terrault*

**Norah Terrault, MD, MPH, FAASLD**  
**AASLD President**

# WHO WILL YOU MEET AT TLM?

## ATTENDEES AT-A-GLANCE

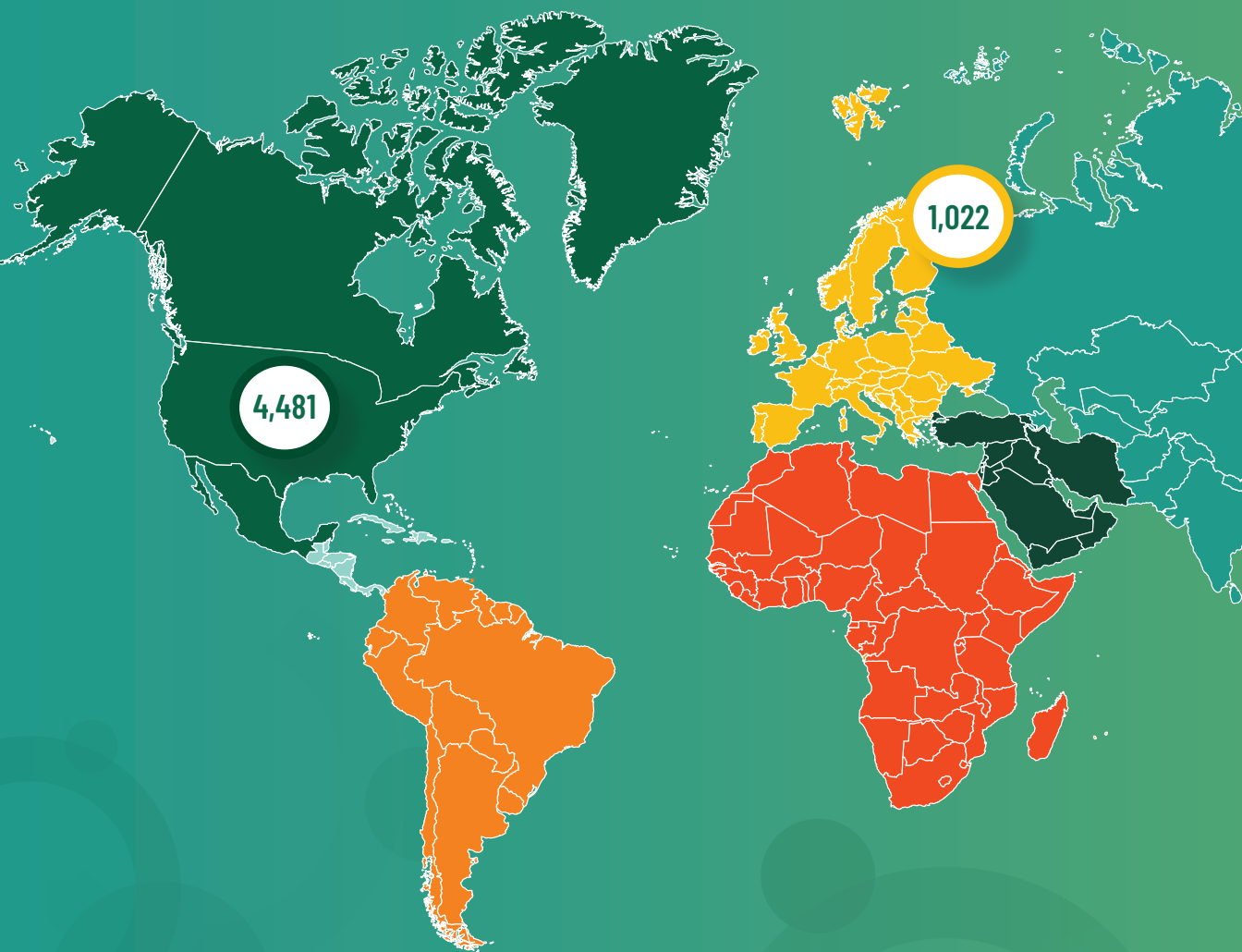






# MAKE LASTING GLOBAL CONNECTIONS

---

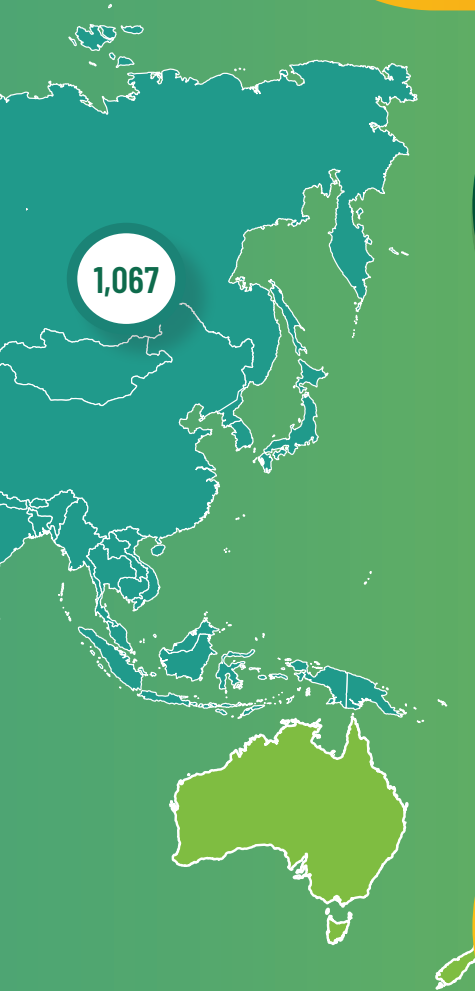


**NEED A VISA LETTER?**

Visit [aasld.org/visa-letter-generator](https://aasld.org/visa-letter-generator) to get started.



TLM AND TLMdX HAD A COMBINED  
TOTAL OF **6,737 REGISTRANTS** FROM  
**79 COUNTRIES** IN 2022.



**66.5%**

**NORTH  
AMERICA**

**4,481 Registrants**

**15.8%**

**ASIA**

**1,067 Registrants**

**15.2%**

**EUROPE**

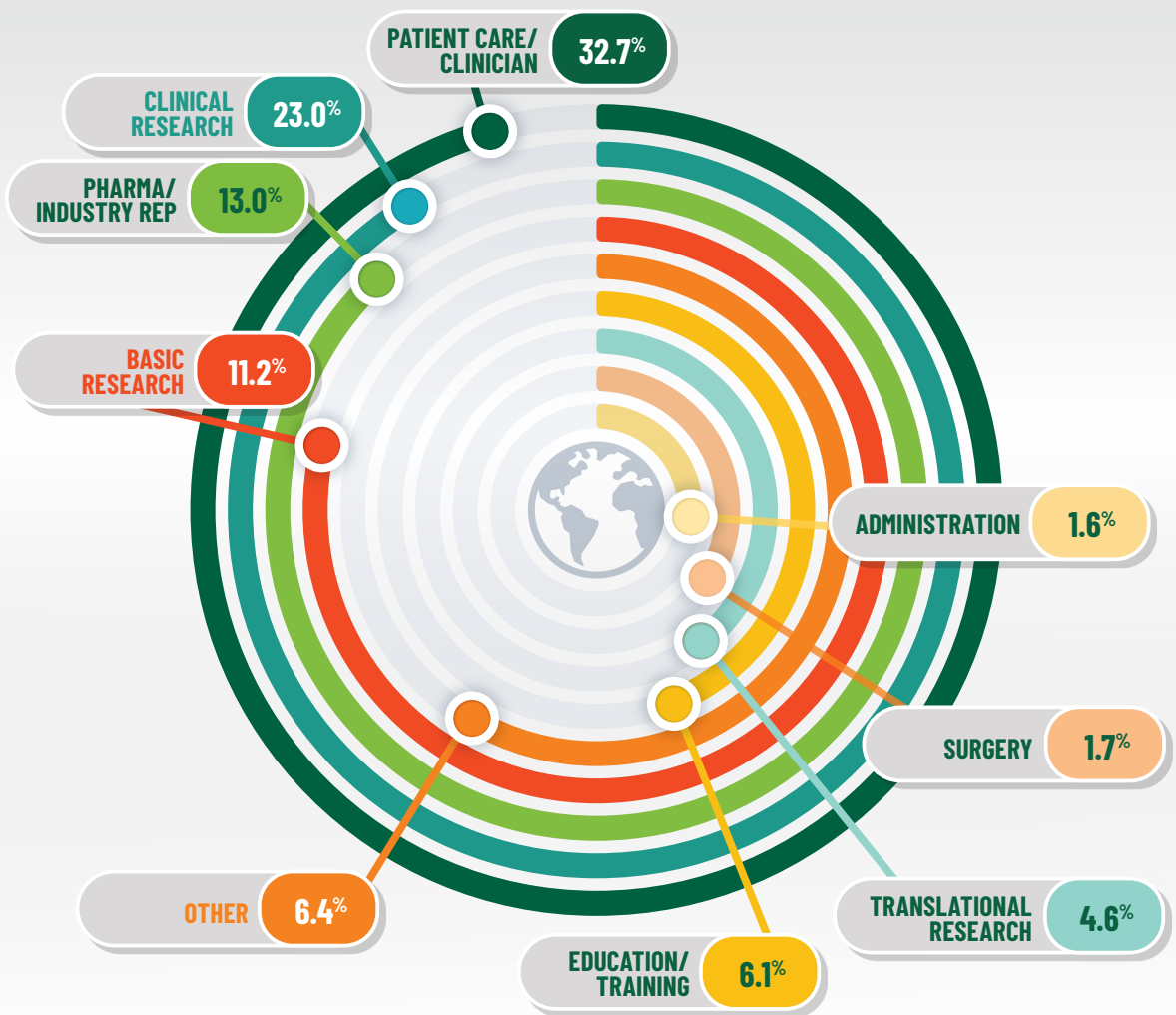
**1,022 Registrants**

**2.5%**

**OTHER  
REGIONS**

**167 Registrants**

# PRIMARY PROFESSIONAL ACTIVITY





# PRIMARY SPECIALTY AREAS

TLM participants reported the following as their specialties or areas of focus.

Addiction Medicine

Basic Science

Clinical Pharmacology

Clinical Science

Epidemiology/Public Health

Gastroenterology

Hepatology

Immunology

Infectious Diseases

Internal Medicine

Oncology

Pathology

Pediatrics

Primary Care

Radiology

Surgery

Virology

# YEARS OF PROFESSIONAL EXPERIENCE

10.4%

IN TRAINING

16.2%

LESS THAN 5 YEARS

17.8%

5 - 10 YEARS

24.3%

11 - 20 YEARS

17.8%

21 - 30 YEARS

10.1%

MORE THAN 30 YEARS

# THE LIVER MEETING 2023 AT-A-GLANCE

FRIDAY, NOVEMBER 10	SESSIONS	ADDITIONAL INFORMATION
8:30 a.m. - 10 a.m.	Patient Annual Forum and Keynote Address	<i>Patient Programming</i>
8:30 a.m. - 5:30 p.m.	Basic Science Symposium: Bile Acids at the Cross-Road of the Gut-Liver and Brain-Liver Axes	
8:30 a.m. - 5:30 p.m.	AASLD/ILTS Transplant Course	
8:30 a.m. - 5:30 p.m.	AASLD/ASGE Endoscopy Course	
8:30 a.m. - 5:50 p.m.	Postgraduate Course: Cirrhosis as a Multisystem Disorder	
10:45 a.m. - 12:30 p.m.	Hepatology Skills Workshop 1	
11 a.m. - 12:30 p.m.	Autoimmune/PBC/PSC	<i>Patient Programming</i>
2 p.m. - 3:30 p.m.	Hepatology Skills Workshop 2	
2 p.m. - 3:30 p.m.	NAFLD	<i>Patient Programming</i>
4:30 p.m. - 6 p.m.	Hepatitis C	<i>Patient Programming</i>

SATURDAY, NOVEMBER 11	SESSION TYPE	SESSION TOPIC
8:30 a.m. - 10 a.m.	Liver Transplantation and Surgery Special Interest Group (SIG)	<i>Innovations in Transplantation: Now and Beyond</i>
8:30 a.m. - 10 a.m.	Portal Hypertension: Clinical and Experimental SIG and Acute on Chronic Liver Failure (ACLF) SIG	<i>Improving Outcomes in Patients with Portal Hypertension and ACLF: Beyond the Guidelines</i>
8:30 a.m. - 10 a.m.	Alcohol-Associated Liver Disease SIG	<i>Early Liver Transplantation for Severe Alcohol-Associated Hepatitis: The Keys for Selection, Prognostication and Monitoring</i>



<b>SATURDAY, NOVEMBER 11 (CONT.)</b>	<b>SESSION TYPE</b>	<b>SESSION TOPIC</b>
8:30 a.m. - 10 a.m.	<b>Cholestatic and Autoimmune Liver Diseases SIG</b>	<i>The Gut-Liver Axis as Therapeutic Target in Cholestatic Liver Disease</i>
8:30 a.m. - 10 a.m.	<b>Liver Cell Biology in Hepatic Disease SIG</b>	<i>Spatial Cellular Interactions and Functions in Liver Health and Disease</i>
8:30 a.m. - 10 a.m.	<b>Public Health/Healthcare Delivery SIG</b>	<i>Applied Health Informatics in Action</i>
8:30 a.m. - 10 a.m.	<b>Clinical Practice SIG</b>	<i>Clinical Practice Challenges</i>
8:30 a.m. - 10 a.m.	<b>Liver Cancer</b>	<i>Patient Programming</i>
11 a.m. - 12:30 p.m.	<b>Surgery and Liver Transplantation Workshop</b>	
11 a.m. - 12:30 p.m.	<b>Hepatotoxicity SIG</b>	<i>Drug-Induced Liver Injury From Cancer Therapies</i>
11 a.m. - 12:30 p.m.	<b>Portal Hypertension: Clinical and Experimental SIG and ACLF SIG</b>	<i>Improving Outcomes in Patients With Portal Hypertension and ACLF: Beyond the Guidelines</i>
11 a.m. - 12:30 p.m.	<b>Pediatric Liver Disorders SIG and Nonalcoholic Fatty Liver Disease (NAFLD) SIG</b>	<i>NAFLD From Tweens to Twenties – Steering Toward Improved Outcomes</i>
11 a.m. - 12:30 p.m.	<b>Hepatitis B SIG</b>	<i>Hepatitis B: Optimizing Diagnosis and Management To Achieve Elimination</i>
11 a.m. - 12:30 p.m.	<b>Career Development Workshop</b>	
11 a.m. - 12:30 p.m.	<b>Alcohol-Associated Liver Disease</b>	<i>Patient Programming</i>
2 p.m. - 3:30 p.m.	<b>Hepatitis B</b>	<i>Patient Programming</i>
2:30 p.m. - 4 p.m.	<b>Surgery and Liver Transplantation Workshop</b>	
2:30 p.m. - 4 p.m.	<b>Liver Cancer SIG</b>	<i>Role of Systemic Therapy From Early to Advanced Stages of HCC</i>

SATURDAY, NOVEMBER 11 (CONT.)	SESSION TYPE	SESSION TOPIC
2:30 p.m. - 4 p.m.	Liver Fibrosis SIG	<i>Artificial Intelligence for the Diagnosis and Treatment of Liver Fibrosis</i>
2:30 p.m. - 4 p.m.	Pediatric Liver Disorders SIG and NAFLD SIG	<i>NAFLD from Tweens to Twenties – Steering Toward Improved Outcomes</i>
2:30 p.m. - 4 p.m.	Hepatitis C SIG	<i>Overcoming Challenges in the Hepatitis C Care Cascade</i>
4 p.m. - 5 p.m.	Academic Debate	
5 p.m. - 6 p.m.	President’s Choice Lecture	<i>Digitized Medicine</i>
SUNDAY, NOVEMBER 12	SESSIONS	ADDITIONAL INFORMATION

8:30 a.m. - 9 a.m.	Thomas E. Starzl Transplant Surgery State-of-the-Art Lecture: Alcohol-Associated Liver Disease – Transplant Triumphs and Challenges	
9 a.m. - 10 a.m.	Transplant Surgery Plenary	
8:30 a.m. - 10 a.m.	Hepatology Associates Course	
8:30 a.m. - 10 a.m.	Basic Research Workshop: Humanized Models – Tools To Advance Liver Disease Research	
8:30 a.m. - 10 a.m.	Emerging Translational Approaches Targeting Cellular-geospatial Heterogeneity in Cholangiocarcinoma	
8:30 a.m. - 10 a.m.	General Hepatology Update	
8:30 a.m. - 10 a.m.	AASLD/NASPGHAN Pediatric Symposium Part 1: Epidemic of Severe Acute Hepatitis in Children – Epidemiology, Breakthroughs and Future Response	



<b>SUNDAY, NOVEMBER 12</b> (CONT.)	<b>SESSIONS</b>	<b>ADDITIONAL INFORMATION</b>
8:30 a.m. - 10 a.m.	<b>Pediatric and Rare Diseases</b>	<i>Patient Programming</i>
11a.m. - 11:30 a.m.	<b>Hyman J. Zimmerman Hepatotoxicity State-of-the- Art Lecture: Acetaminophen Detection and Treatment in 2023</b>	
11:30 a.m. - 12:30 p.m.	<b>Clinical Plenary #1</b>	
11:30 a.m. - 12:30 p.m.	<b>Hepatology Associates Course</b>	
11:30 a.m. - 12:30 p.m.	<b>Basic Research Workshop: Humanized Models – Tools To Advance Liver Disease Research</b>	
11:30 a.m. - 12:30 p.m.	<b>AASLD/NASPGHAN Pediatric Symposium Part 2: Hepatology Meet Hematology – Can One Live Without the Other?</b>	
11:30 a.m. - 12:30 p.m.	<b>Advances in the Management of Primary Biliary Cholangitis, Primary Sclerosing Cholangitis and Cholangiocarcinoma: A Global Perspective</b>	
11:30 a.m. - 12:30 p.m.	<b>Patient – Provider Communication</b>	<i>Patient Programming</i>
2 p.m. - 3:30 p.m.	<b>AASLD Practice Guidelines Workshop: What’s New</b>	
2 p.m. - 3:30 p.m.	<b>The Editor’s Cut: Basic and Translational Studies</b>	
2 p.m. - 3:30 p.m.	<b>The Editors' Cut: Clinical Studies</b>	
2 p.m. - 3:30 p.m.	<b>Health Disparities Solutions</b>	
2 p.m. - 3:30 p.m.	<b>Evolving Impact of Hepatology Associates in Liver Care</b>	
2 p.m. - 3:30 p.m.	<b>Healthy Lifestyle/Wellness/ Nutrition</b>	<i>Patient Programming</i>
4:30 p.m. - 6 p.m.	<b>Implementation Heroes: Masters of the Art of Care Delivery in Hepatology</b>	

SUNDAY, NOVEMBER 12 (CONT.)	SESSIONS	ADDITIONAL INFORMATION
--------------------------------	----------	---------------------------

4:30 p.m. - 6 p.m.	The Editor's Cut: Clinical Studies	
4:30 p.m. - 6 p.m.	Managing Frailty/Palliative Care	<i>Patient Programming</i>

MONDAY, NOVEMBER 13	SESSIONS
------------------------	----------

8:30 a.m. - 9 a.m.	Leon Schiff State-of-the-Art Lecture: Personalized Approach to HCC
9 a.m. - 10 a.m.	Clinical Plenary #2
8:30 a.m. - 10 a.m.	AASLD/Japanese Joint Symposium: Cutting Edge – Approach to Diagnostics and Treatments in Chronic Liver Disease
11a.m. - 11:30 a.m.	Hans Popper State-of-the-Art Lecture: Next Generation Human Liver Gene Therapy
11:30 a.m. - 12:30 p.m.	Basic Science Plenary #1
11 a.m. - 12:30 p.m.	Overcoming Inequalities in Health To Eliminate Hepatitis
2 p.m. - 3:30 p.m.	Clinical Research Workshop, Innovations in Clinical Studies or Clinical Trials for Liver Diseases Part 1
2 p.m. - 3:30 p.m.	Alcohol All Things Considered - Biomarkers to Developing a Clinical Research Program in Alcohol-Associated Liver Disease
4:30 p.m. - 6 p.m.	Clinical Research Workshop, Innovations in Clinical Studies or Clinical Trials for Liver Diseases Part 2
4:30 p.m. - 6 p.m.	NAFLD: Global Variances and Therapeutic Approach

TUESDAY, NOVEMBER 14	SESSIONS
-------------------------	----------

9 a.m. - 9:30 a.m.	Basic Science Debrief
9 a.m. - 10 a.m.	Portal Hypertension Debrief
10 a.m. - 10:30 a.m.	Hepatitis Debrief
10:30 a.m. 11:00 a.m.	Cholestatic Debrief
11:00 a.m. 11:30 a.m.	NAFLD Debrief







## BASIC SCIENCE SYMPOSIUM

# BILE ACIDS AT THE CROSS-ROAD OF THE GUT-LIVER AND BRAIN-LIVER AXES

**FRIDAY, NOVEMBER 10**

8:30 a.m. - 5:30 p.m.

7.0 CME Credits

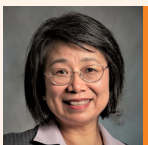


*Admission to the Basic Science Symposium is included in the price of registration.*

This Basic Science Symposium will bring together 350 – 500 basic and clinical investigators interested in the molecular and cellular mechanisms underlying bile acid metabolism, signaling and organ crosstalk to enhance the development of translational approaches to treating various liver diseases and their intestinal and neurological symptoms.

The symposium will cover recent advances in our understanding of the role of microbiome and bile-acid signaling in controlling the gut-liver-brain axis under both physiological and pathological conditions. Speakers will include the most outstanding scientists in the field of bile acids, microbiome studies and liver diseases. Junior investigators, as well as pre- and post-doctoral trainees, are encouraged to attend.

### PROGRAM CHAIRS



**Grace Guo,**  
Rutgers University



**Huiping Zhou,**  
Virginia Commonwealth University



**Olivier Barbier,**  
Université Laval



**TICKETED SESSION** 

**POSTGRADUATE COURSE**

## CIRRHOSIS AS A MULTISYSTEM DISORDER

**FRIDAY, NOVEMBER 10**

8:30 a.m. - 5:50 p.m.

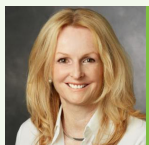
7.0 CME Credits 

Chronic liver disease and cirrhosis are leading causes of death in the United States. Although cirrhosis affects primarily the liver, portal hypertension and end-stage liver disease have much more pervasive effects on patient health. This four-session course provides a comprehensive update on the multisystem effects of liver cirrhosis.

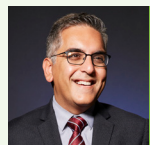
Each one of the four sessions will address how the disease process occurs that informs care for patients with cirrhosis. Featuring real-life cases with panel discussions and debates, the sessions are both practical and interactive.

Attendees who want more in-depth ACLF and portal hypertension subject matter should attend the companion Portal Hypertension and ACLF joint SIG programs on Saturday.

### PROGRAM CHAIRS



**Natalie Torok,**  
*Stanford University*



**Sumeet Asrani,**  
*Baylor University*

# The Liver Meeting® (TLM)

## IN-PERSON REGISTRATION RATES

AASLD Member Rates	Member	
	High and Upper-middle Income Countries	Low and Lower-middle Income Countries
<b>Early Bird</b> Jul 19 – Sep 13	\$420	\$280
<b>Advance</b> Sep 14 – Oct 18	\$545	\$365
<b>Regular</b> Oct 19 – Nov 14	\$655	\$445
<b>Postgraduate Course</b> <i>(add-on price with TLM in-person ticket)</i>	\$300	\$125
<b>ILTS</b> <i>(add-on price with TLM in-person ticket)</i>	\$300	\$125
<b>ASGE</b> <i>(add-on price with TLM in-person ticket)</i>	\$300	\$125

Non-Member Rates	Non-Member	
	High and Upper-middle Income Countries	Low and Lower-middle Income Countries
<b>Early Bird</b> Jul 19 – Sep 13	\$1,125	\$550
<b>Advance</b> Sep 14 – Oct 18	\$1,465	\$720
<b>Regular</b> Oct 19 – Nov 14	\$1,750	\$865
<b>Postgraduate Course</b> <i>(add-on price with TLM in-person ticket)</i>	\$500	\$175
<b>ILTS</b> <i>(add-on price with TLM in-person ticket)</i>	\$500	\$175
<b>ASGE</b> <i>(add-on price with TLM in-person ticket)</i>	\$500	\$175

Patient Advocate, Patient and Caregiver Rates	Patient Advocate, Patient or Caregiver
<b>Early Bird</b> Jul 19 – Sep 13	\$50
<b>Advance</b> Sep 14 – Oct 18	\$50
<b>Regular</b> Oct 19 – Nov 14	\$50



Associate Member	Trainee Member	Student Member
\$280	\$280	\$95
\$365	\$365	\$125
\$445	\$445	\$150
\$125	\$125	\$60
\$125	\$125	\$60
\$125	\$125	\$60

Associate Non-Member	Trainee Non-Member	Student Non-Member
\$550	\$550	\$325
\$720	\$720	\$425
\$865	\$865	\$505
\$175	\$175	\$125
\$175	\$175	\$125
\$175	\$175	\$125

# IN-PERSON STAND-ALONE COURSE RATES

AASLD Member Rates	Postgraduate	
	Member	
	High and Upper-middle Income Countries	Low and Lower-middle Income Countries
<b>Early Bird</b> Jul 19 – Sep 13	<b>\$425</b>	<b>\$180</b>
<b>Advance</b> Sep 14 – Oct 18	<b>\$550</b>	<b>\$235</b>
<b>Regular</b> Oct 19 – Nov 14	<b>\$660</b>	<b>\$280</b>

Non-Member Rates	Postgraduate	
	Non-Member	
	High and Upper-middle Income Countries	Low and Lower-middle Income Countries
<b>Early Bird</b> Jul 19 – Sep 13	<b>\$680</b>	<b>\$260</b>
<b>Advance</b> Sep 14 – Oct 18	<b>\$885</b>	<b>\$340</b>
<b>Regular</b> Oct 19 – Nov 14	<b>\$1,060</b>	<b>\$410</b>

AASLD Member Rates	ILTS or AS	
	Member	
	High and Upper-middle Income Countries	Low and Lower-middle Income Countries
<b>Early Bird</b> Jul 19 – Sep 13	<b>\$425</b>	<b>\$180</b>
<b>Advance</b> Sep 14 – Oct 18	<b>\$550</b>	<b>\$235</b>
<b>Regular</b> Oct 19 – Nov 14	<b>\$660</b>	<b>\$280</b>

Non-Member Rates	ILTS or AS	
	Non-Member	
	High and Upper-middle Income Countries	Low and Lower-middle Income Countries
<b>Early Bird</b> Jul 19 – Sep 13	<b>\$680</b>	<b>\$260</b>
<b>Advance</b> Sep 14 – Oct 18	<b>\$885</b>	<b>\$340</b>
<b>Regular</b> Oct 19 – Nov 14	<b>\$1,060</b>	<b>\$410</b>

### Course, Stand-alone, November 10, 2023

Associate Member	Trainee Member	Student Member
\$180	\$180	\$50
\$235	\$235	\$65
\$280	\$280	\$80

### Course, Stand-alone, November 10, 2023

Associate Non-Member	Trainee Non-Member	Student Non-Member
\$260	\$260	\$185
\$340	\$340	\$240
\$410	\$410	\$290

### Course, Stand-alone, November 10, 2023

Associate Member	Trainee Member	Student Member
\$180	\$180	\$50
\$235	\$235	\$65
\$280	\$280	\$80

### Course, Stand-alone, November 10, 2023

Associate Non-Member	Trainee Non-Member	Student Non-Member
\$260	\$260	\$185
\$340	\$340	\$240
\$410	\$410	\$290

# TLM Digital Experience™ (TLMdX)

## REGISTRATION RATES

AASLD Member Rates	Member	
	High and Upper-middle Income Countries	Low and Lower-middle Income Countries
<b>Early Bird</b> Jul 19 – Sep 13	\$420	\$280
<b>Advance</b> Sep 14 – Oct 18	\$420	\$280
<b>Regular</b> Oct 19 – Nov 14	\$420	\$280
<b>Postgraduate Course</b> <i>(add-on price with TLMdX ticket)</i>	N/A	N/A

Non-Member Rates	Non-Member	
	High and Upper-middle Income Countries	Low and Lower-middle Income Countries
<b>Early Bird</b> Jul 19 – Sep 13	\$1,125	\$550
<b>Advance</b> Sep 14 – Oct 18	\$1,125	\$550
<b>Regular</b> Oct 19 – Nov 14	\$1,125	\$550
<b>Postgraduate Course</b> <i>(add-on price with TLMdX ticket)</i>	\$400	\$95

Patient Advocate, Patient and Caregiver Rates	Patient Advocate, Patient or Caregiver
<b>Early Bird</b> Jul 19 – Sep 13	\$50
<b>Advance</b> Sep 14 – Oct 18	\$50
<b>Regular</b> Oct 19 – Nov 14	\$50



Associate Member	Trainee Member	Student Member
\$280	\$280	\$95
\$280	\$280	\$95
\$280	\$280	\$95
N/A	N/A	N/A

Associate Non-Member	Trainee Non-Member	Student Non-Member
\$550	\$550	\$325
\$550	\$550	\$325
\$550	\$550	\$325
\$95	\$95	\$60

# TLMdX STAND-ALONE COURSE RATES

			Member	
			High and Upper-middle Income Countries	Low and Lower-middle Income Countries
AASLD Member Rates			\$350	\$150

			Non-Member	
			High and Upper-middle Income Countries	Low and Lower-middle Income Countries
Non-Member Rates			\$680	\$260

ILTS or ASGE, Stand-alone				
AASLD Member Rates	Member	Associate Member	Trainee Member	Student Member
<b>Early Bird</b> Jul 19 – Sep 13	<p style="text-align: center;"><b>\$50</b></p> <p><i>Purchase the OnDemand course, and watch up to 30 days post-meeting (included if attending the course in person)</i></p>			
<b>Advance</b> Sep 14 – Oct 18				
<b>Regular</b> Oct 19 – Nov 14				

### Postgraduate Course, Stand-alone

Associate Member	Trainee Member	Student Member
\$150	\$150	\$50

### Postgraduate Course, Stand-alone

Associate Non-Member	Trainee Non-Member	Student Non-Member
\$260	\$260	\$185

Non-Member Rates	ILTS or ASGE, Stand-alone			
	Non-Member	Associate Non-Member	Trainee Non-Member	Student Non-Member
<b>Early Bird</b> Jul 19 - Sep 13	<b>\$100</b> <i>Purchase the OnDemand course, and watch up to 30 days post-meeting (included if attending the course in person)</i>			
<b>Advance</b> Sep 14 - Oct 18				
<b>Regular</b> Oct 19 - Nov 14				





## HOTEL INFORMATION

# Book your hotel by October 13 for early bird rates!

To save you time and money, AASLD has negotiated the best rates with area hotels using AASLD International Group housing (AASLD-IGH). The hotels provide flexible booking policies, great group tools and a full team of wonderful customer service agents to ensure that you have a smooth booking process.

These housing rates are confirmed until Tuesday, October 17, 2023, on a space-available basis. Visit [aasld.org/livermeeting](https://aasld.org/livermeeting) for more information.

Hotel	Rate per Night
Boston Marriott Copley Place	\$379
Boston Park Plaza	\$297
Colonnade Hotel	\$373
Courtyard Boston Downtown	\$315
Fairmont Copley Plaza	\$399
Four Seasons Hotel One Dalton Street	\$475
Hilton Boston Back Bay	\$309
Hyatt Regency Boston	\$299
Omni Parker House	\$308
Sheraton Boston (Headquarters Hotel – AASLD Members Only)	\$355
Westin Copley Place	\$379

*Hotel rates are subject to a 14.45% tax. Package rates for AASLD-IGH may vary.*

**BOOK BY OCTOBER 17 TO BE PART OF THE AASLD BLOCK**



Learn more at [aasld.org/livermeeting](https://aasld.org/livermeeting)



**AASLD** Nov. 10-14, 2023  
**The Liver Meeting**®



**BOSTON, MA**

LEARN MORE



**Stronger Together**

