

AASLD  
The Liver  
Meeting®



YOUR **IMPACT** MAKES A DIFFERENCE

2025 EXHIBITOR & SPONSOR PROSPECTUS

NOVEMBER 7-11

● Washington, DC

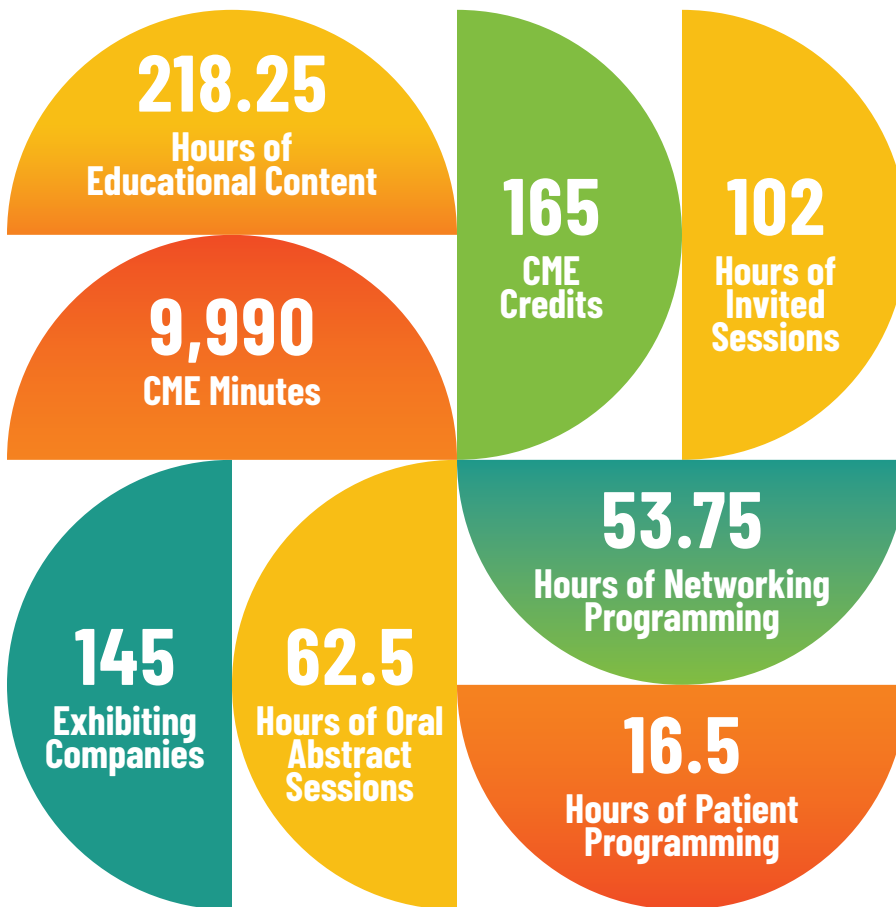
● [www.aasld.org/the-liver-meeting](http://www.aasld.org/the-liver-meeting)

# MAKE AN IMPACT

With almost **9000 attendees** representing **six continents** and **90 countries**, The Liver Meeting® is a testament of **how it takes a community**, working together, to prevent and cure liver disease.

The 2024 Liver Meeting attendees experience the most comprehensive program:

**2,684** ABSTRACTS - ORAL AND POSTERS **2,420** POSTER PRESENTATIONS



## ABOUT AASLD

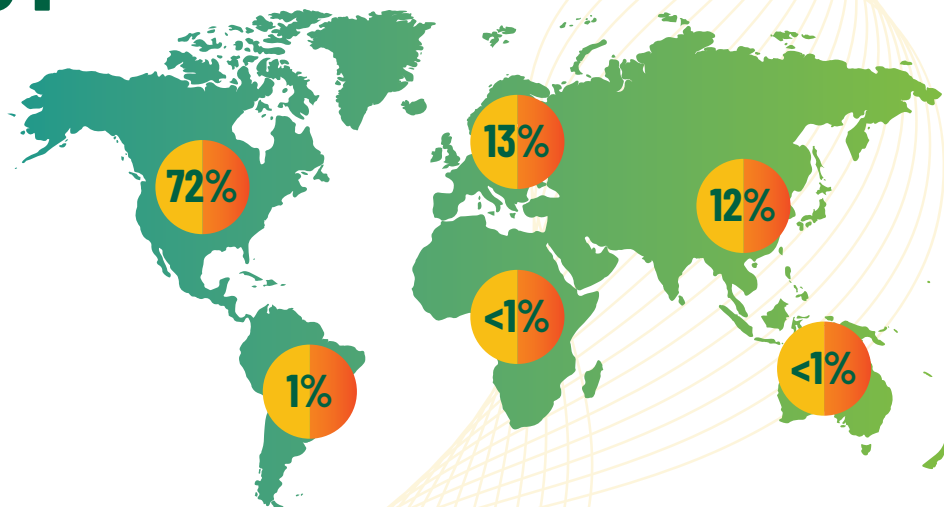
As the leading organization of **over 7,000 member** scientists and healthcare professionals, AASLD is committed to preventing and curing liver disease. By advancing the science and practice of hepatology through training programs, professional publications, educational conferences, and partnerships (industry and government), we aim to promote liver health and quality patient care.



# TLM 2024 IMPACT

The Liver Meeting attracts a diverse audience of hepatology professionals, including clinicians, researchers, and allied health providers from around the globe. Attendees range from early-career trainees to world-renowned leaders and experts representing academia, clinical practice, and industry—who are all dedicated to advancing the science and treatment of liver disease.

## GLOBAL REPRESENTATION



## PROFESSIONAL FOCUS AREA



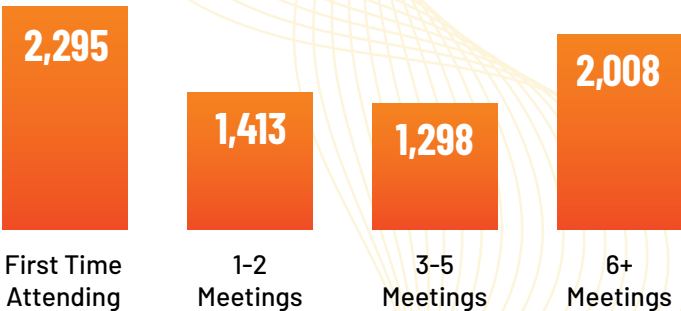
- 25% Patient Care/Clinician
- 23% Other
- 20% Clinical Research
- 13% Pharma/Industry Representation
- 8% Basic Research
- 5% Translational Research
- 4% Education Training
- 1% Surgery
- 1% Administration

**46%**  
OF ATTENDEES  
HAVE PRESCRIBING  
CAPABILITIES

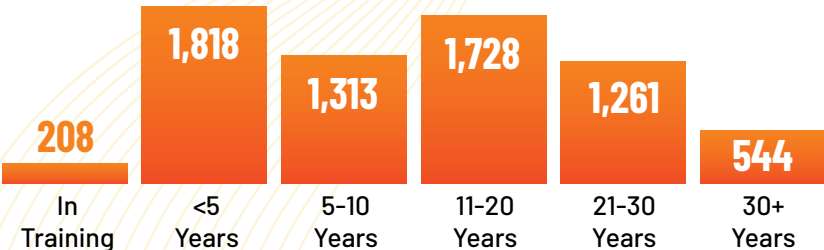
## SPECIALTY AREA\*

- 58% Hepatology
- 23% Gastroenterology
- 6% Infectious Diseases
- 8% Internal Medicine
- 8% Science-Basic
- 7% Science-Clinical
- 5% Immunology
- 5% Oncology
- 5% Other
- 4% Pediatrics
- 4% Epidemiology/Public Health
- 4% Surgery
- 3% Clinical Pharmacology
- 3% Virology
- 2% Pathology
- 1% Addiction Medicine
- 1% Primary Care
- 1% Radiology

## YEARS OF TLM ATTENDANCE



## YEARS OF PROFESSIONAL SERVICE



\* NOTE: ATTENDEES MAY SELECT MORE THAN ONE OPTION

# MAXIMIZE YOUR IMPACT

Whether you are highlighting groundbreaking research, introducing a new product, or establishing strategic partnerships, TLM is the hepatology event to attend. Join industry leaders and immerse yourself in an environment driven by discovery, innovation, and collaboration by exhibiting at TLM.

## VIEW EXHIBIT HALL FLOOR

[AASLD.ORG/INDUSTRY](https://aasld.org/industry)

## EXHIBIT HALL HOURS

Saturday, November 8 Opening Reception <b>6:00-7:30 PM</b>	Sunday, November 9 <b>9:30 AM-5:00 PM</b>	Monday, November 10 <b>9:30 AM-5:00 PM</b>
---	---	--

# AMPLIFY YOUR IMPACT

AASLD offers a diverse range of sponsorship opportunities designed to align with your organizational goals. Whether you're aiming to boost your brand, enhance your presence, showcase your science, or strengthen industry connections, we have options to meet your needs. Elevate your brand, engage with a highly targeted audience, and leave a lasting impact.

### ATTENDEE EXPERIENCES

- Exhibit Hall Opening Reception
- Headshot Lounge
- Members' Reception
- Meet-ups in the Park @ TLM
- Pickleball

### DIGITAL

- Email Banner Ads
- Digital Signage
- Conference App Ads
- ePosters

### ONSITE BRANDING

- Banners
- Escalator & Wall Clings
- Signage

### INDUSTRY PROGRAMMING

- TLM Theater
- Satellite Symposia

## BECOME A SPONSOR

## BOOTH PRICES

### Inline Booth: \$3,500

+ \$200/corner  
+ \$300/endcap

### Island Booth: \$39/sq. ft.

### Non-Profit Booth Package: \$850

10x10 Booth Includes: carpet, 6 ft. draped table, 2 chairs, and trash can.

## BUSINESS SUITE PRICES

Book a Business Suite on the exhibit hall floor for a convenient and private place to conduct business with AASLD attendees.

### Small Business Suite: \$5,000

(10x10 for 5 people)

### Large Business Suite: \$9,000

(10x20 for 10 people)

### Deluxe Business Suite: \$14,000

(20x20 for 15 people)

# CONTACT US

Contact AASLD's Exhibit & Sponsorship Team to explore sponsorship opportunities and book your exhibit space.

### REBECCA STEUER

Sales Manager, Exhibits & Sponsorship

P: (571) 500-1293

E: [rsteuer@aasld.org](mailto:rsteuer@aasld.org)

### HEATHER COONEY, CMP, CEM

Director, Exhibits & Sponsorship

P: (571) 895-7521

E: [hcooney@aasld.org](mailto:hcooney@aasld.org)

## SCHEDULE TIME TODAY

[CALENDLY.COM/AASLD](https://calendly.com/aasld)

